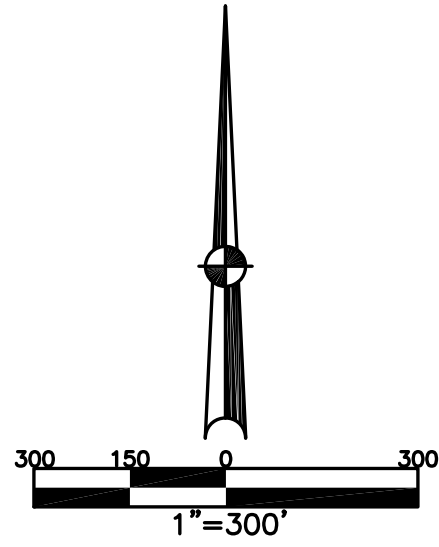


SECTION 19, 24
TOWN 5, 7
RANGE 6, 5

CITY OF TROY
MIAMI COUNTY, OHIO

PARCEL ID NUMBER
D08-_____

PLAT SW 183

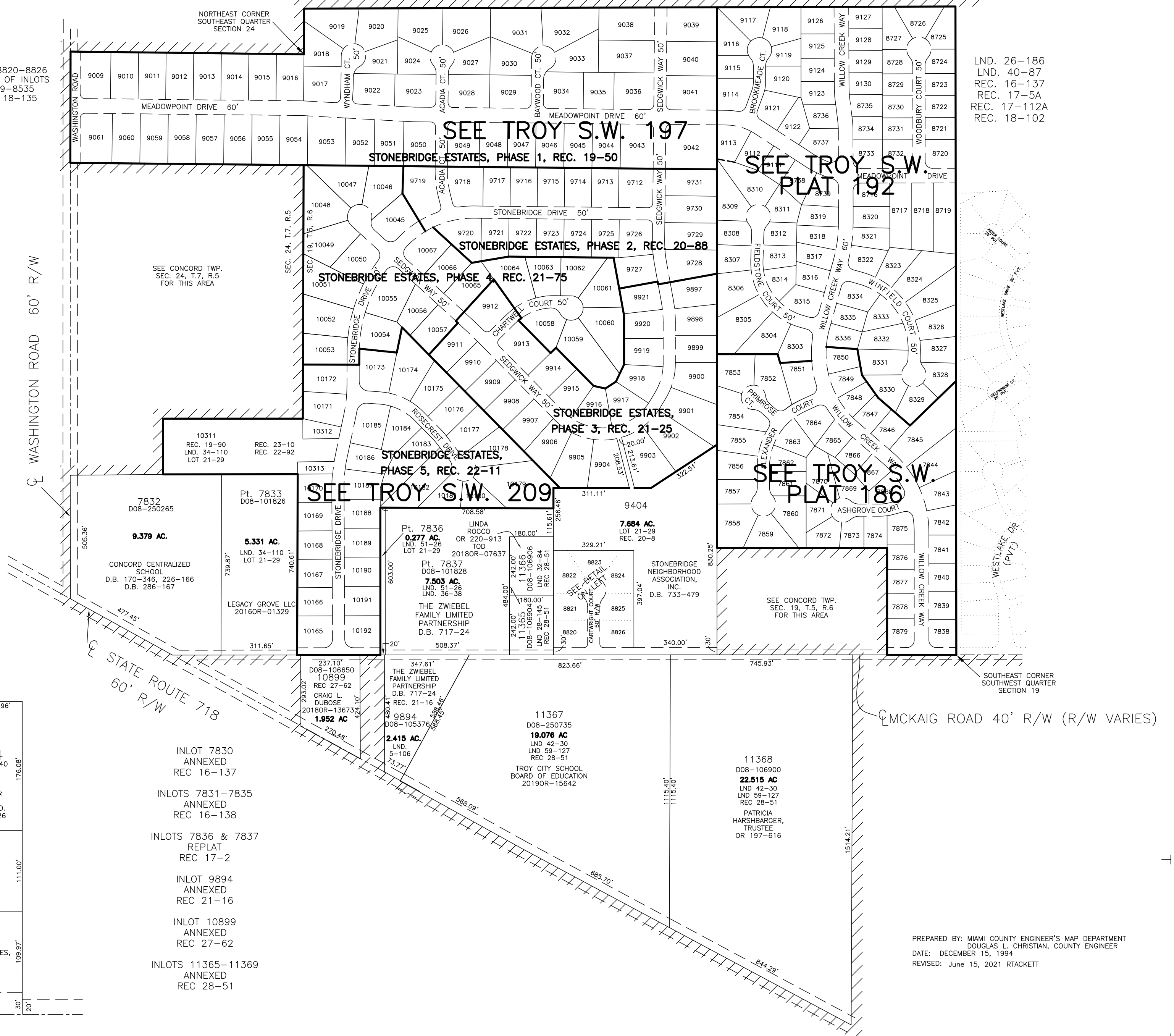


ABBREVIATION LEGEND		
2014OR-07759	=	RECORDER'S DOCUMENT NUMBER
OR 28-471	=	OFFICIAL RECORD 28, PAGE 471
D.B. 613-172	=	DEED BOOK 613, PAGE 172
REC. 15-72	=	RECORDER'S PLAT BOOK 15, PAGE 72
LND. 33-15	=	LAND SURVEY VOLUME 33, PAGE 15
LOT 19-12	=	LOT SURVEY VOLUME 19, PAGE 12
R.R. 8-29	=	ROAD RECORD VOLUME 8, PAGE 29
R/W	=	RIGHT OF WAY
C	=	CENTERLINE
AC.	=	ACRES
TWP.	=	TOWNSHIP
TR.	=	TRACT
IL.	=	INLOT

LINE LEGEND		
	=	Blow-up Boundary
	=	Property Line
	=	Lot Split Line
	=	Section Line
	=	Centerline
	=	Right-of-Way Line
	=	Corporation Line

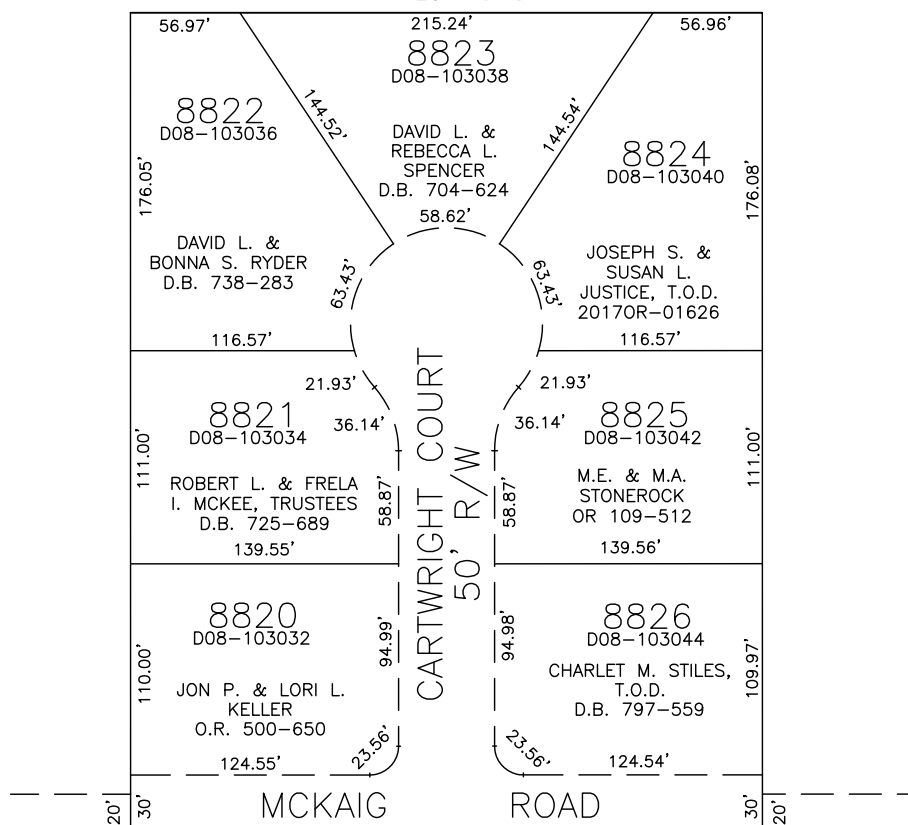
SURVEY INDEX		
REC 16-137	LOT 21-29	LND. 5-106
REC 16-138	LOT 24-177	LND. 8-24
REC 17-2		LND. 8-137
REC 17-5A		LND. 17-190
REC 17-112A		LND. 26-186
REC 18-8		LND. 34-110
REC 18-135		LND. 36-38
REC 18-102		LND. 36-45
REC 19-50		LND. 40-87
REC 19-89		LND. 51-26
REC 20-88		
REC 21-16		
REC 21-25		
REC 21-75		
REC 22-11		
REC 22-92		
REC 23-10		
REC 27-62		
REC 28-51		

LOTS 8820-8826
REPLAT OF INLOTS
8529-8535
REC 18-135



LND. 26-186
LND. 40-87
REC. 16-137
REC. 17-5A
REC. 17-112A
REC. 18-102

LITTLE PONDEROSA ESTATES
SECTION ONE
REC. 18-8



INLOT 7830
ANNEXED
REC 16-137

INLOTS 7831-7835
ANNEXED
REC 16-138

INLOTS 7836 & 7837
REPLAT
REC 17-2

INLOT 9894
ANNEXED
REC 21-16

INLOT 10899
ANNEXED
REC 27-62

INLOTS 11365-11369
ANNEXED
REC 28-51

PREPARED BY: MIAMI COUNTY ENGINEER'S MAP DEPARTMENT
DOUGLAS L. CHRISTIAN, COUNTY ENGINEER
DATE: DECEMBER 15, 1994
REVISED: June 15, 2021 RTACKETT