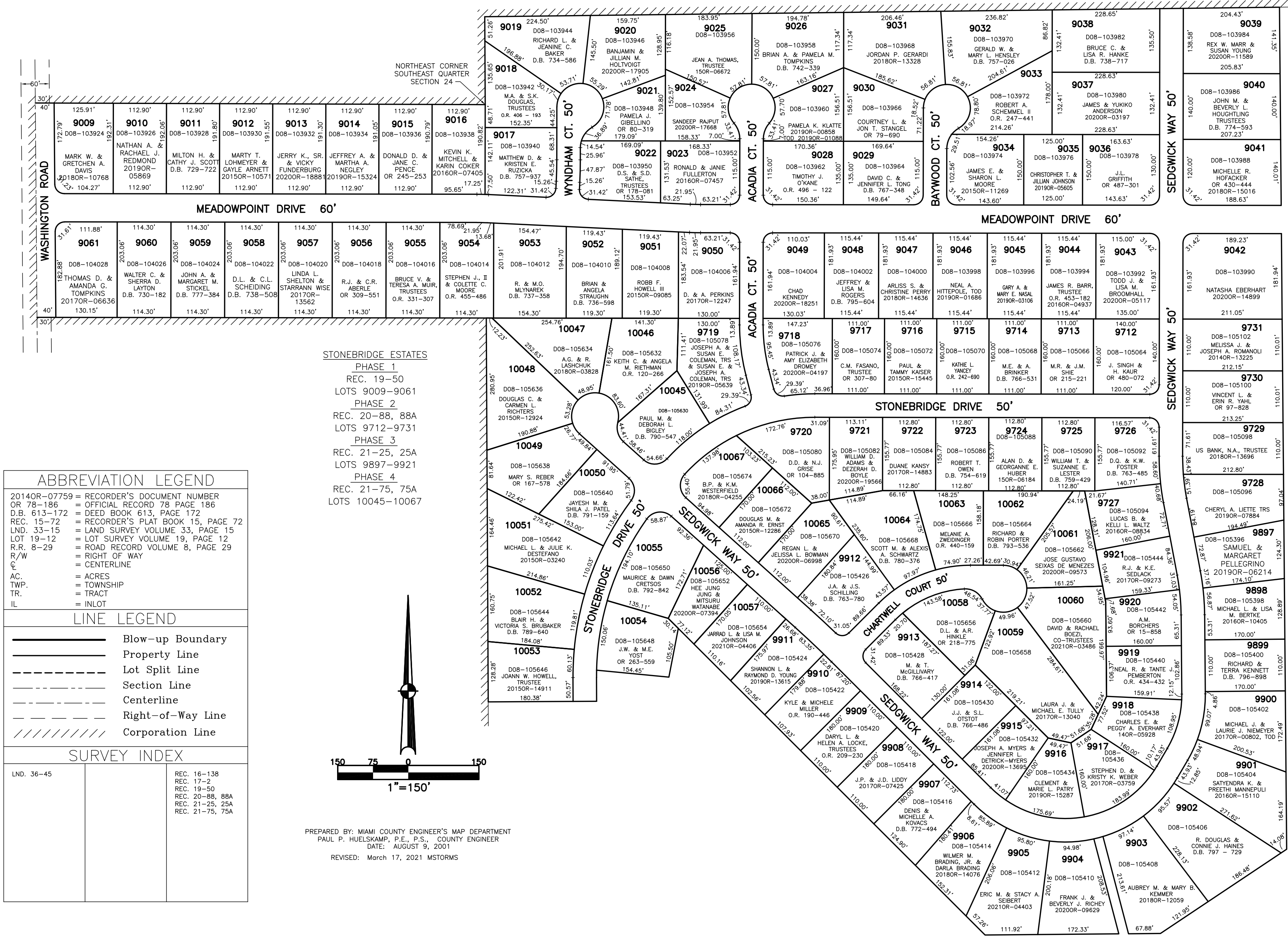


SECTION 24, 19  
TOWN 7, 5  
RANGE 5, 6

CITY OF TROY  
MIAMI COUNTY, OHIO

PARCEL NUMBER  
D08 -

PLAT SW 197



ABBREVIATION LEGEND	
20140R-07759	= RECORDER'S DOCUMENT NUMBER OR 78-186
78-186	= OFFICIAL RECORD 78 PAGE 186
D.B. 613-172	= DEED BOOK 613, PAGE 172
REC. 15-72	= RECORDER'S PLAT BOOK 15, PAGE 72
LND. 33-15	= LAND SURVEY VOLUME 33, PAGE 15
LOT 19-12	= LOT SURVEY VOLUME 19, PAGE 12
R.R. 8-29	= ROAD RECORD VOLUME 8, PAGE 29
R/W	= RIGHT OF WAY
C.	= CENTERLINE
AC.	= ACRES
TWP.	= TOWNSHIP
TR.	= TRACT
IL	= INLOT

LINE LEGEND	
	Blow-up Boundary
	Property Line
	Lot Split Line
	Section Line
	Centerline
	Right-of-Way Line
	Corporation Line

SURVEY INDEX	
LND. 36-45	REC. 16-138
	REC. 17-2
	REC. 19-50
	REC. 20-88, 88A
	REC. 21-25, 25A
	REC. 21-75, 75A

STONEBRIDGE ESTATES  
PHASE 1  
REC. 19-50  
LOTS 9009-9061  
PHASE 2  
REC. 20-88, 88A  
LOTS 9712-9731  
PHASE 3  
REC. 21-25, 25A  
LOTS 9897-9921  
PHASE 4  
REC. 21-75, 75A  
LOTS 10045-10067

PREPARED BY: MIAMI COUNTY ENGINEER'S MAP DEPARTMENT  
PAUL P. HUELSKAMP, P.E., P.S., COUNTY ENGINEER  
DATE: AUGUST 9, 2001  
REVISED: March 17, 2021 M5TORMS