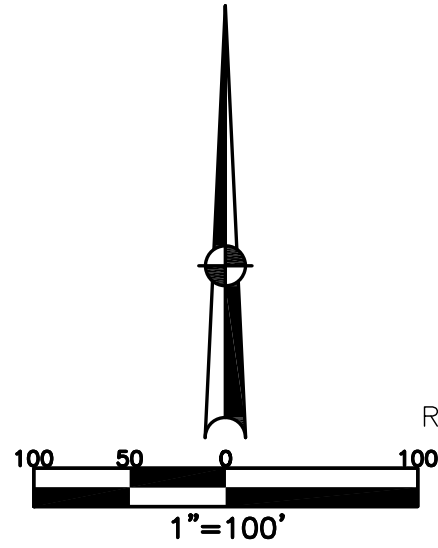


CITY of TROY
MIAMI COUNTY, OHIO

SECTION 19
TOWN 5
RANGE 6

PARCEL ID NUMBER
D08-104562

PLAT SW 200



ABBREVIATION LEGEND	
20140R-07759	= RECORDER'S DOCUMENT NUMBER OR 110-398
D.B. 613-172	= DEED BOOK 613, PAGE 172
REC. 15-72	= RECORDER'S PLAT BOOK 15, PAGE 72
LND. 33-15	= LAND SURVEY VOLUME 33, PAGE 15
LOT 19-12	= LOT SURVEY VOLUME 19, PAGE 12
R.R. 8-29	= ROAD RECORD VOLUME 8, PAGE 29
R/W	= RIGHT OF WAY
C	= CENTERLINE
AC.	= ACRES
TWP.	= TOWNSHIP
TR.	= TRACT
IL	= INLOT

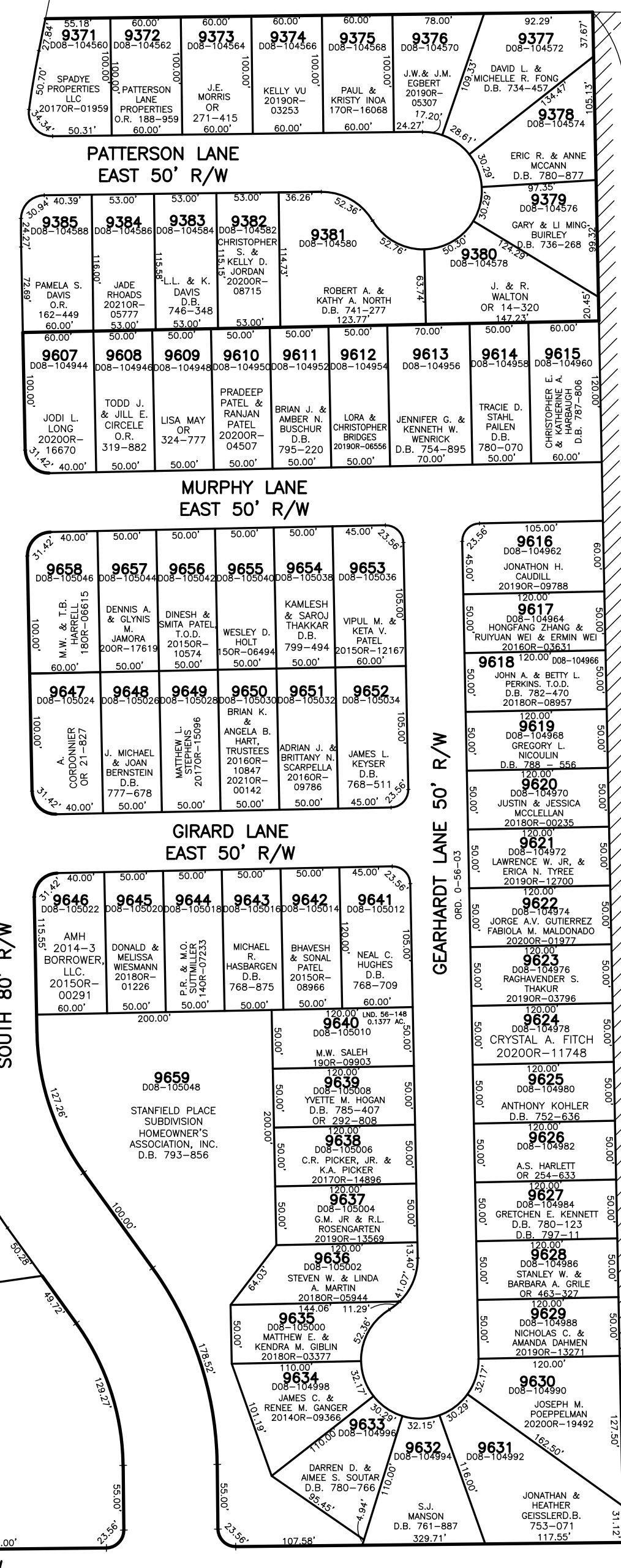
LINE LEGEND	
	Blow-up Boundary
	Property Line
	Lot Split Line
	Section Line
	Centerline
	Right-of-Way Line
	Corporation Line

SURVEY INDEX	
LND. 28-7	REC. 13-126
LOT 20-31	REC. 14-55
LOT 20-151	REC. 14-132
LOT 21-36	REC. 19-85A-D
LND. 56-148	REC. 19-144A-D
	REC. 20-39B
	REC. 20-58, 58A, 58B

PREPARED BY: MIAMI COUNTY ENGINEER'S MAP DEPARTMENT
PAUL P. HUELSKAMP, P.E., P.S., COUNTY ENGINEER
DATE: DECEMBER 9, 2001
REVISED: June 21, 2021 MSTORMS

S.W. CORNER
S.E. QUARTER
S-19, T-5, R-6

PREPARED BY: MIAMI COUNTY ENGINEER'S MAP DEPARTMENT
PAUL P. HUELSKAMP, P.E., P.S., COUNTY ENGINEER
DATE: DECEMBER 30, 2017 CH
REVISED: June 21, 2021 MSTORMS



STANFIELD PLACE
SECTION 3
LOTS 9607-9659
REC. BK. 20PG. 58, 58A, 58B

REC. 13-126
ROAD REC. 8-92