

CONCORD TWP

MIAMI COUNTY, OHIO

PLAT NO. 6

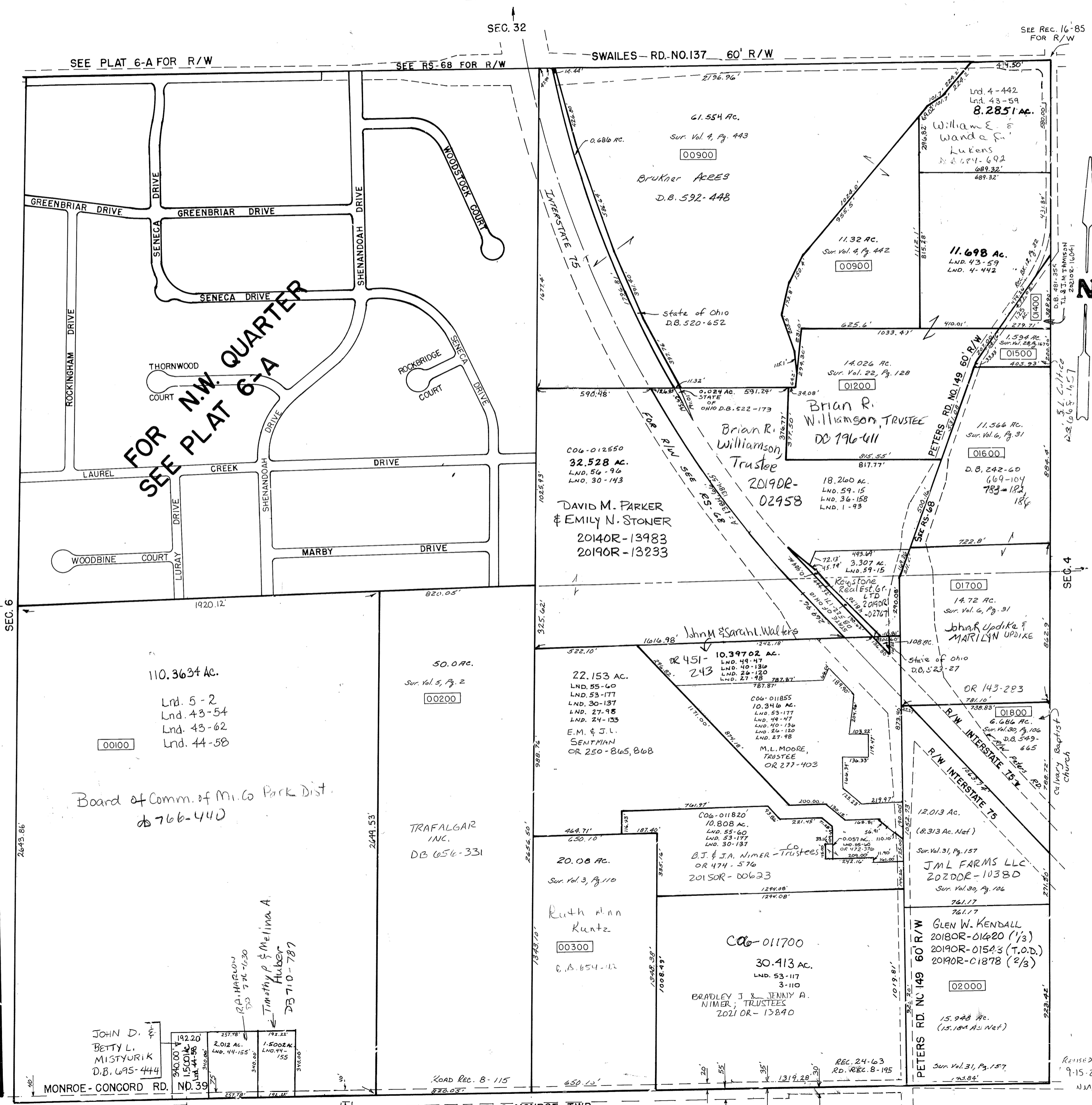
Section 5, Town 4, Range 6

PARCEL SMBA NUMBER
C06-0000

SCALE: 1" = 400'

SEE REC. 16-85
FOR R/W

SURVEYS	
S.E. QUARTER	
SUR. VOL. 3, PG. 110 SUR. VOL. 24, PG. 133 SUR. VOL. 26, PG. 120 SUR. VOL. 27, PG. 98 SUR. VOL. 30, PG. 106 SUR. VOL. 30, PG. 137 LND. SUR. 40, PG. 136 LND SUR. 49 PG. 47 LND. 53-177 LND. 55-60 LND. 56-96 LND. 59-15	REC. 24-63 RD. REC. B-195 LND. 31-157
N.E. QUARTER	
SUR. VOL. 1, PG. 93 SUR. VOL. 4, PG. 442 SUR. VOL. 4, PG. 443 SUR. VOL. 6, PG. 31 SUR. VOL. 22, PG. 128 SUR. VOL. 28, PG. 167 SUR. VOL. 30, PG. 143 " " 36, PG. 158 Lnd. 43-59 LND. 53-117 LND. 56-96 LND. 59-15	REC. BK. 12, PG. 32 " " 16, " 85
S.W. QUARTER	
SUR. VOL. 5, PG. 2 LND. 43-54 Lnd. 43-62 Lnd. 44-58 LND. 44-155	
N.W. QUARTER	
SUR. VOL. 3, PG. 58 SUR. VOL. 3, PG. 424 SUR. VOL. 5, PG. 2 SUR. VOL. 5, PG. 113 SUR. VOL. 6, PG. 153 SUR. VOL. 24, PG. 181 SUR. VOL. 25, PG. 123 SUR. VOL. 35, PG. 96 SUR. VOL. 38, PG. 133	REC. BK. 6, PG. 56 REC. BK. 11, PG. 128 REC. BK. 11, PG. 129 REC. BK. 12, PG. 52 REC. BK. 12, PG. 93 REC. BK. 13, PG. 33 REC. BK. 13, PG. 63 REC. BK. 13, PG. 65 REC. BK. 14, PG. 54 REC. BK. 14, PG. 72 REC. BK. 14, PG. 87 REC. BK. 14, PG. 96 REC. BK. 14, PG. 123 REC. BK. 15, PG. 29 REC. BK. 15, PG. 119 REC. BK. 16, PG. 33 REC. BK. 16, PG. 92 REC. BK. 16, PG. 99



SEE REC. 16-85 FOR R/W

SEC. 4

Calvary Baptist Church

REVISED 9-15-21