

CONCORD TWP.

MIAMI COUNTY, OHIO

PLAT 7

Section 5/4 Town 5, Range 6 (Fractional Sections)

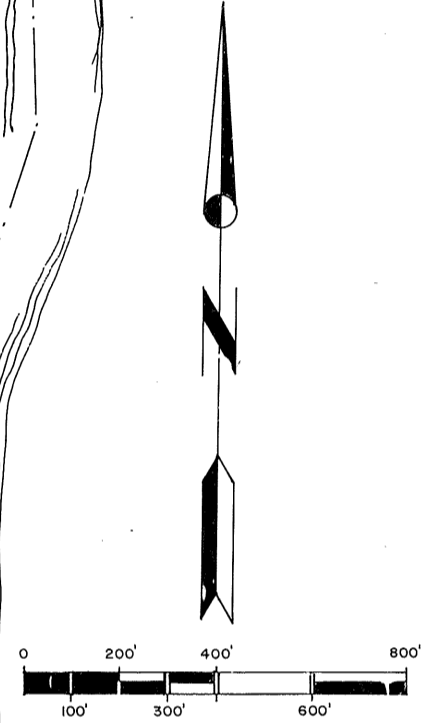
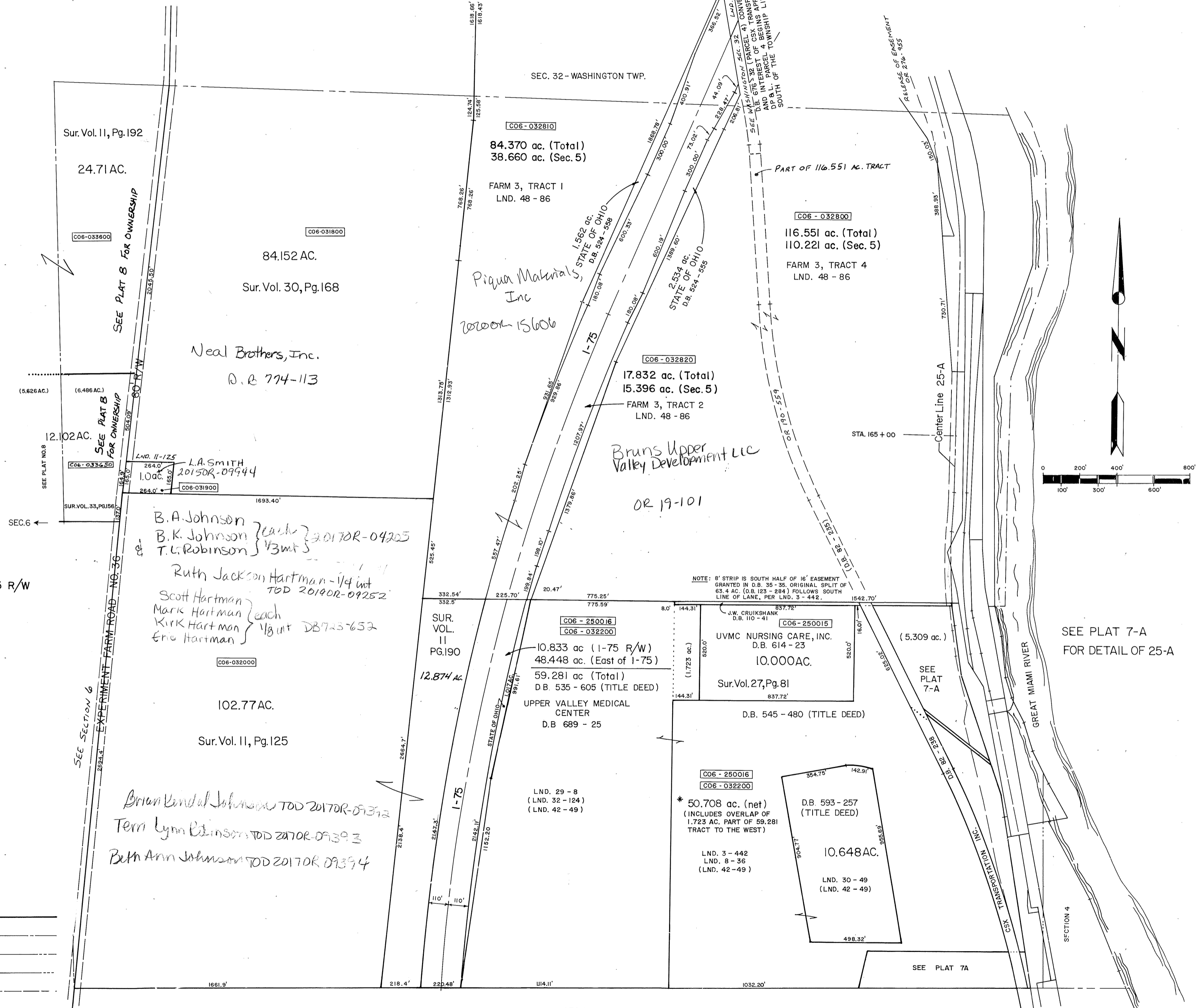
Sections 5 and 4

SURVEYS

- LAND SURVEY VOL. 1, PG. 31
- VOL. 2, PG. 14
- PG. 115
- VOL. 3, PG. 54
- PG. 442
- VOL. 4, PG. 148
- PG. 149
- PG. 222
- PG. 345
- VOL. 8, PG. 36
- VOL. 11, PG. 125
- PG. 190
- PG. 192
- VOL. 16, PG. 12
- VOL. 21, PG. 156
- VOL. 24, PG. 139
- VOL. 26, PG. 76
- VOL. 27, PG. 81
- VOL. 28, PG. 37
- VOL. 29, PG. 8
- VOL. 30, PG. 48
- PG. 168
- VOL. 32, PG. 124
- PG. 198
- VOL. 33, PG. 156
- LND. 42-49
- LND. 48-86
- LND. 53-31
- LND. 57-153

REC. BK. VOL. 6, PG. 56 } 1-75 R/W
R.S. 68, R.S. 84

- PROPERTY LINE
- CENTERLINE
- SECTION LINE
- HALF SECTION LINE
- ROAD RIGHT-OF-WAY



SEE PLAT 7-A
FOR DETAIL OF 25-A

SEC. 8