

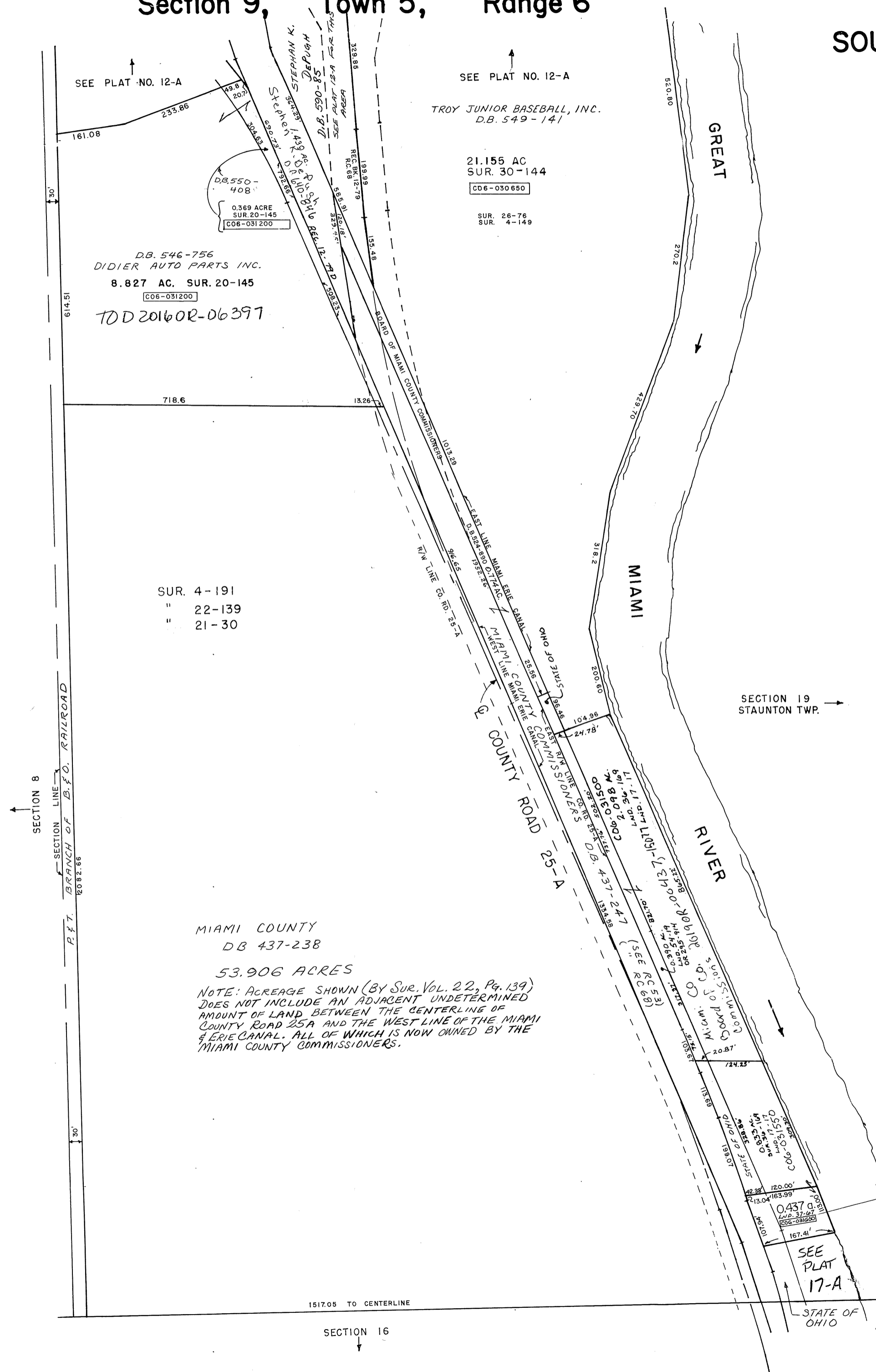
# CONCORD TWP.

## MIAMI COUNTY, OHIO Section 9, Town 5, Range 6

# PLAT 12-B

## SOUTH HALF SEC. 9

PARCEL NUMBER  
C06-031200



SCALE : 1" = 200'

MIAMI COUNTY  
DB 437-238  
53.906 ACRES  
NOTE: ACREAGE SHOWN (BY SUR. VOL. 22, Pg. 139)  
DOES NOT INCLUDE AN ADJACENT UNDETERMINED  
AMOUNT OF LAND BETWEEN THE CENTERLINE OF  
COUNTY ROAD 25A AND THE WEST LINE OF THE MIAMI  
& ERIE CANAL. ALL OF WHICH IS NOW OWNED BY THE  
MIAMI COUNTY COMMISSIONERS.

2021 OR-06289  
MIAMI COUNTY BOARD OF  
COUNTY COMMISSIONERS  
LD. SUR. VOL. 37, Pg. 67