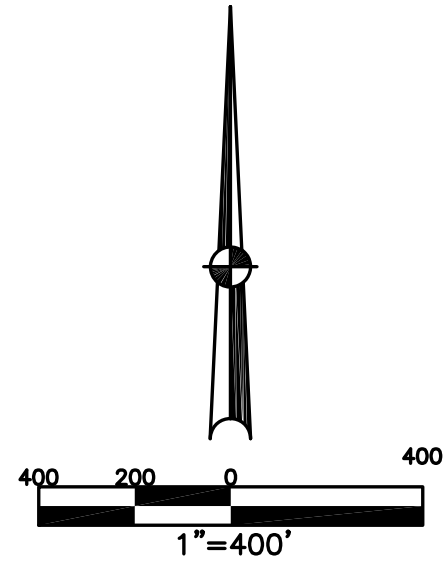


CONCORD TWP.
MIAMI COUNTY, OHIO

SECTION 13 TOWN 7 RANGE 5

PARCEL NUMBER
C06-_____

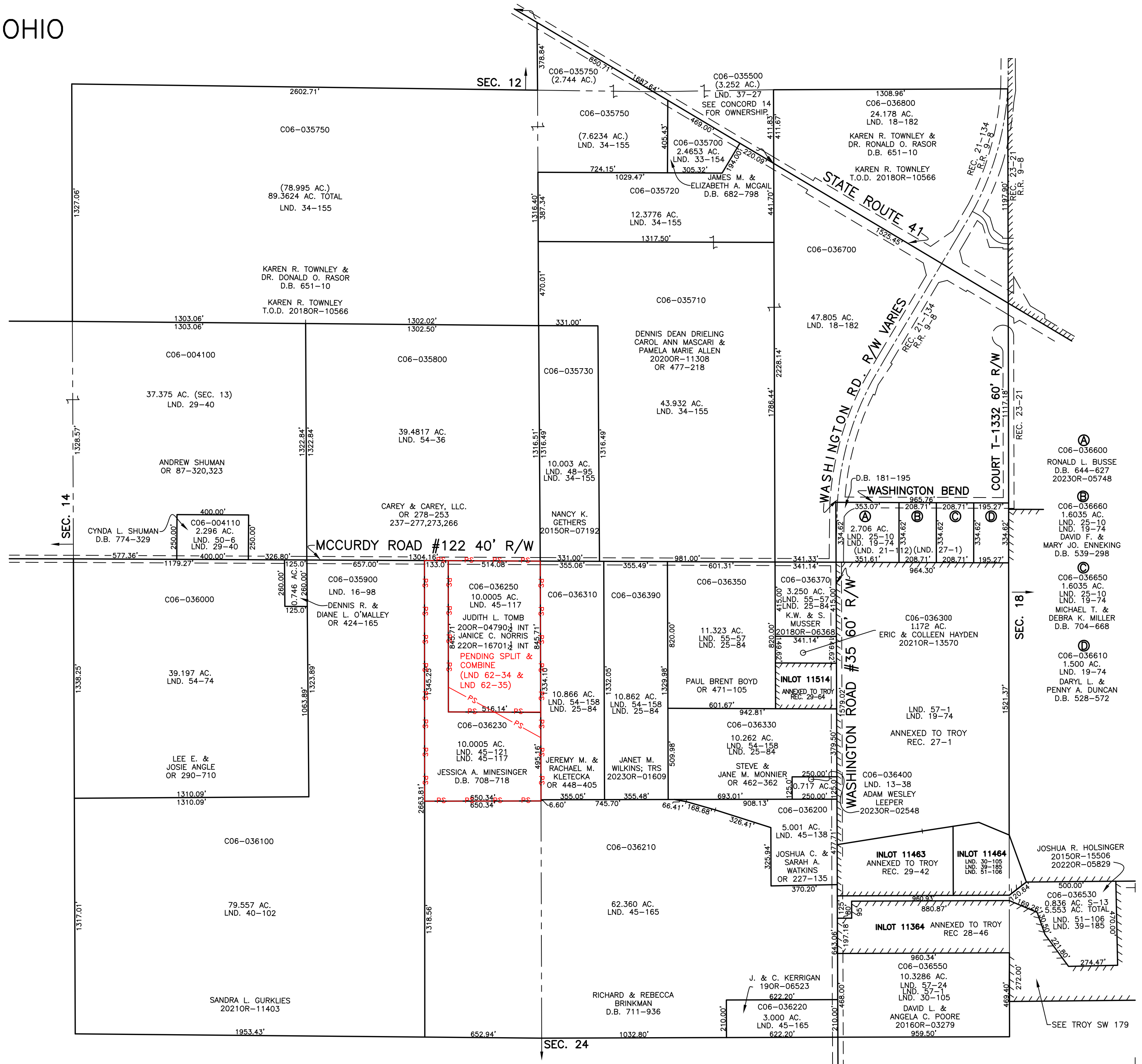
PLAT 15



ABBREVIATION LEGEND	
2014OR-07759 =	RECORDER'S DOCUMENT NUMBER
OR 257-619 =	OFFICIAL RECORD 257 PAGE 619
D.B. 613-172 =	DEED BOOK 613, PAGE 172
REC. 15-72 =	RECORDER'S PLAT BOOK 15, PAGE 72
LND. 33-15 =	LAND SURVEY VOLUME 33, PAGE 15
LOT 19-12 =	LOT SURVEY VOLUME 19, PAGE 12
R.R. 8-29 =	ROAD RECORD VOLUME 8, PAGE 29
R/W	= RIGHT OF WAY
⊕	= CENTERLINE
AC.	= ACRES
TWP.	= TOWNSHIP
TR.	= TRACT
Ⓢ	= LOT CREATED BY RECORDER'S PLAT

LINE LEGEND	
	Blow-up Boundary
	Property Line
	Lot Split Line
	Section Line
	Centerline
	Right-of-Way Line
	Corporation Line

SURVEY INDEX	
NORTHEAST QUARTER	
LND. 2-56	REC. 21-134
LND. 4-132	REC. 23-21
LND. 18-182	
LND. 19-74	R.R. 9-8
LND. 21-112	
LND. 27-10	
LND. 33-154	
LND. 37-27	
LND. 48-95	
SOUTHEAST QUARTER	
LND. 2-56	LND. 60-72
LND. 3-101	REC. 27-1
LND. 13-38	REC. 28-46
LND. 19-74	REC. 29-42
LND. 25-44	REC. 29-64
LND. 39-105	
LND. 45-138	
LND. 45-165	
LND. 51-106	
LND. 54-158	
LND. 55-97	
LND. 57-1	
LND. 57-24	
SOUTHWEST QUARTER	
LND. 1-187	
LND. 2-56	
LND. 3-7	
LND. 16-98	
LND. 40-102	
LND. 45-117	
LND. 45-121	
LND. 45-165	
LND. 54-74	
NORTHWEST QUARTER	
LND. 2-56	
LND. 4-12	
LND. 5-132	
LND. 29-40	
LND. 34-155	
LND. 50-6	
LND. 54-36	



PREPARED BY: MIAMI COUNTY ENGINEER'S MAP DEPARTMENT
PAUL P. HUELSKAMP, P.E., P.S., COUNTY ENGINEER
DATE: MARCH 29, 2018 MDS
REVISED: October 3, 2023 MSTORMS

SEE TROY SW 179