

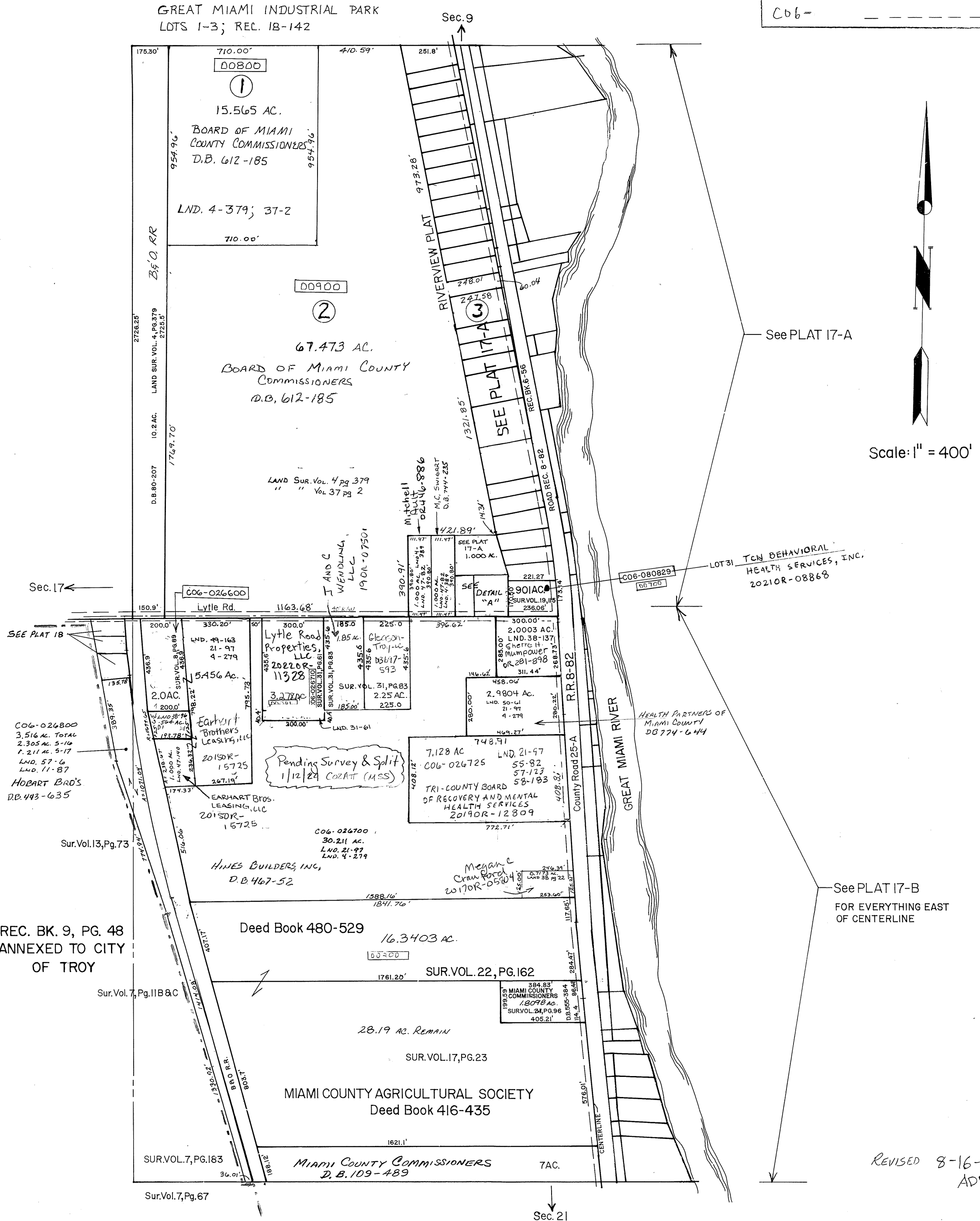
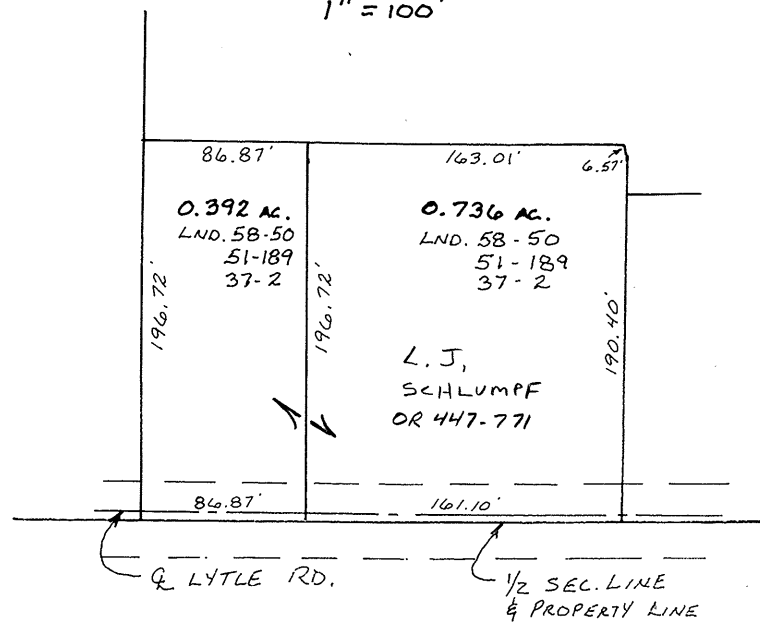
PARCEL NUMBER
C06- _____

SURVEYS

Sur. Vol. 2, Pg. 131	LND. Sur. Vol. 22, Pg. 162
3, Pg. 179 & 80	22, Pg. 189
4, Pg. 307	27, Pg. 31
4, Pg. 96	27, Pg. 178
4, Pg. 279	29, Pg. 48
4, Pg. 379	31, Pg. 61
4, Pg. 389	31, Pg. 83
5, Pg. 52	31, Pg. 96
6, Pg. 113	37, Pg. 154
6, Pg. 140	38, Pg. 84
7, Pg. 11	37, Pg. 2
7, Pg. 67	38, Pg. 22
7, Pg. 183	38-90
8, Pg. 89	LND. 38-137
10, Pg. 165	LND. 47-82
11, Pg. 44	LND. 47-140
11, Pg. 87	LND. 50-91
12, Pg. 170	LND. 51-189
12, Pg. 199	LND. 55-82
13, Pg. 73	LND. 57-6
15, Pg. 198	LND. 57-123
17, Pg. 23	LND. 58-50
19, Pg. 1	LND. 58-183
19, Pg. 98	
19, Pg. 115	
21, Pg. 97	
21, Pg. 116	
21, Pg. 189	

Rec. Book Vol. 6, Pg. 39	Westbrook No. 4
6, Pg. 56	25-A Location Plan
6, Pg. 89	Westbrook No. 4 replat
8, Pg. 37	Troy Land Development
9, Pg. 48	Annexation to Troy
18, Pg. 142	GREAT MIAMI INDUSTRIAL PARK

DETAIL "A"
1" = 100'



Scale: 1" = 400'

See PLAT 17-A

See PLAT 17-B FOR EVERYTHING EAST OF CENTERLINE

REVISED 8-16-22
ADP