

CONCORD TWP.

MIAMI COUNTY, OHIO

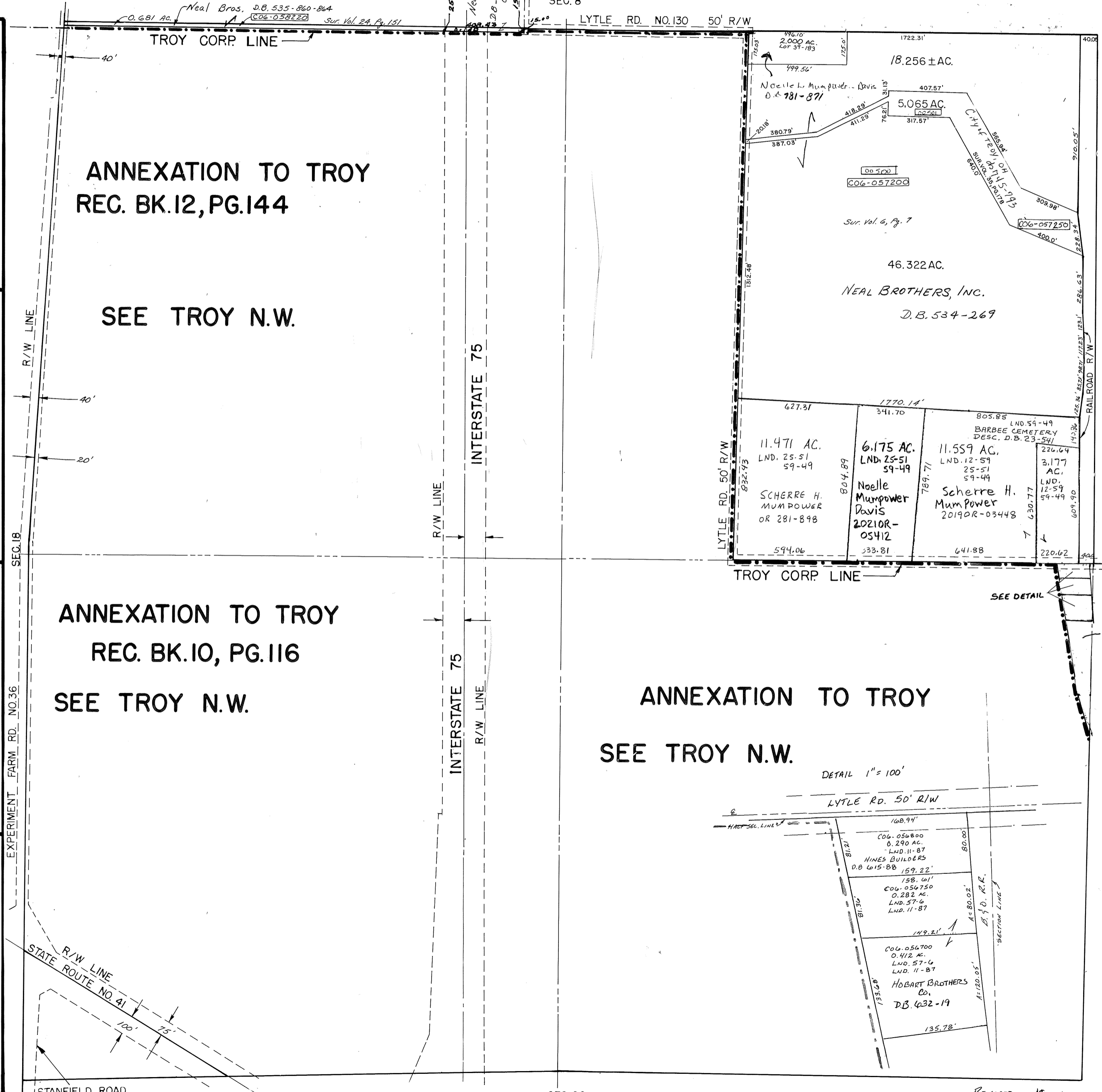
PLAT 18

Section 17, Town 5, Range 6

SCALE: 1" = 400'

SMDA NUMBER
CD6-CC018-

SURVEY	
SUR. VOL. 2, PG. 131 SUR. VOL. 3, PG. 79 SUR. VOL. 7, PG. 11C SUR. VOL. 7, PG. 183 SUR. VOL. 11, PG. 24 SUR. VOL. 11, PG. 87 SUR. VOL. 12, PG. 10 SUR. VOL. 13, PG. 73 LND. 57-6	S.E. QUARTER REC. BK. 6, PG. 39 REC. BK. 6, PG. 89 REC. BK. 8, PG. 37 REC. BK. 9, PG. 48, 49
SUR. VOL. 4, PG. 96 SUR. VOL. 4, PG. 301 SUR. VOL. 6, PG. 7 SUR. VOL. 12, PG. 59 SUR. VOL. 25, PG. 51 SUR. VOL. 28, PG. 176 SUR. VOL. 28, PG. 179 SUR. VOL. 35, PG. 178 LND. Vol. 39, PG. 183 LND. 59-49	N.E. QUARTER ROAD BK. 8, PG. 43
SUR. VOL. 2, PG. 18 SUR. VOL. 2, PG. 131 SUR. VOL. 3, PG. 79 SUR. VOL. 3, PG. 266 SUR. VOL. 5, PG. 3 SUR. VOL. 12, PG. 97 SUR. VOL. 13, PG. 94 SUR. VOL. 13, PG. 185 SUR. VOL. 19, PG. 187 SUR. VOL. 24, PG. 151	S.W. QUARTER REC. BK. 8, PG. 59 REC. BK. 11, PG. 8
SUR. VOL. 3, PG. 266 SUR. VOL. 4, PG. 301 SUR. VOL. 13, PG. 94 SUR. VOL. 24, PG. 151 SUR. VOL. 28, PG. 128 SUR. VOL. 28, PG. 176 SUR. VOL. 28, PG. 179	N.W. QUARTER REC. BK. 12, PG. 144



SEC. 16

SEC. 20

REVISED: 4-1-21
A Palmer