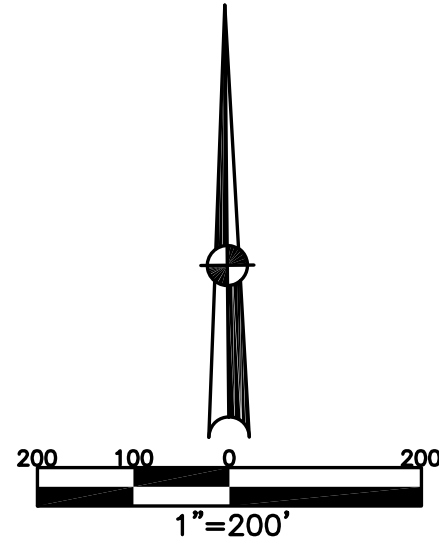


CONCORD TWP.
MIAMI COUNTY, OHIO

SECTION 30 SE 1/4 TOWN 5 RANGE 6

PARCEL NUMBER
C06-067415

PLAT 30-A

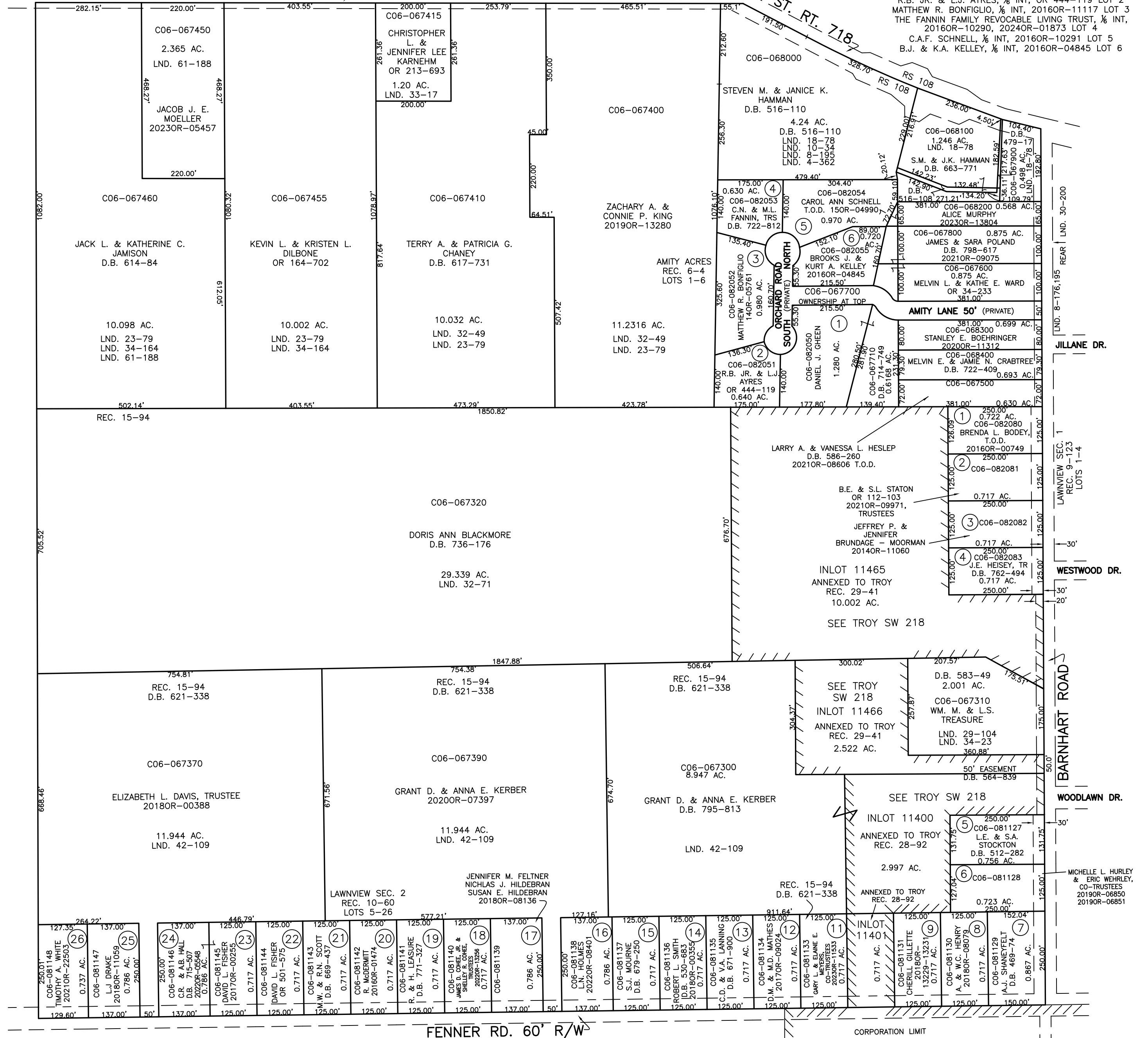


PEEBLES RD. 30' R/W

ST. RT. 718

AMITY LANE ORCHARD ROAD NORTH & SOUTH
1.250 AC. REC. 6-4
DANIEL J. GHEEN, 1/2 INT, D.B. 761-697 LOT 1
R.B. JR. & L.J. AYRES, 1/2 INT, OR 444-119 LOT 2
MATTHEW R. BONFIGLIO, 1/2 INT, 2016OR-11117 LOT 2
THE FANNIN FAMILY REVOCABLE LIVING TRUST, 1/2 INT,
2016OR-10290, 2024OR-01873 LOT 4
C.A.F. SCHNELL, 1/2 INT, 2016OR-10291 LOT 5
B.J. & K.A. KELLEY, 1/2 INT, 2016OR-04845 LOT 6

ABBREVIATION LEGEND		
2014OR-07759	=	RECORDER'S DOCUMENT NUMBER
OR 257-619	=	OFFICIAL RECORD 257 PAGE 619
D.B. 613-172	=	DEED BOOK 613, PAGE 172
REC. 15-72	=	RECORDER'S PLAT BOOK 15, PAGE 72
LND. 33-15	=	LAND SURVEY VOLUME 33, PAGE 15
LOT 19-12	=	LOT SURVEY VOLUME 19, PAGE 12
R.R. 8-29	=	ROAD RECORD VOLUME 8, PAGE 29
R/W	=	RIGHT OF WAY
CL	=	CENTERLINE
AC.	=	ACRES
TWP.	=	TOWNSHIP
TR.	=	TRACT
Ⓢ	=	LOT CREATED BY RECORDER'S PLAT
LINE LEGEND		
	=	Blow-up Boundary
	=	Property Line
	=	Lot Split Line
	=	Section Line
	=	Centerline
	=	Right-of-Way Line
	=	Corporation Line
SURVEY INDEX		
LND. 1-181	LND. 34-164	REC. 6-4
LND. 4-362	LND. 37-80	REC. 9-123
LND. 8-167	LND. 41-197	REC. 10-60
LND. 8-176	LND. 42-109	REC. 15-94
LND. 8-183	LND. 49-150	REC. 28-92
LND. 8-195	LND. 61-188	REC. 29-41
LND. 18-78		RS 108
LND. 23-79		
LND. 25-79		
LND. 29-104		
LND. 30-200		
LND. 32-49		
LND. 32-71		
LND. 33-17		



PREPARED BY: MIAMI COUNTY ENGINEER'S MAP DEPARTMENT
PAUL P. HUELSKAMP, P.E., P.S., COUNTY ENGINEER
DATE: AUGUST 25, 2014 MB

REVISED: February 27, 2024 JBOGART

FENNER RD. 60' R/W

CORPORATION LIMIT