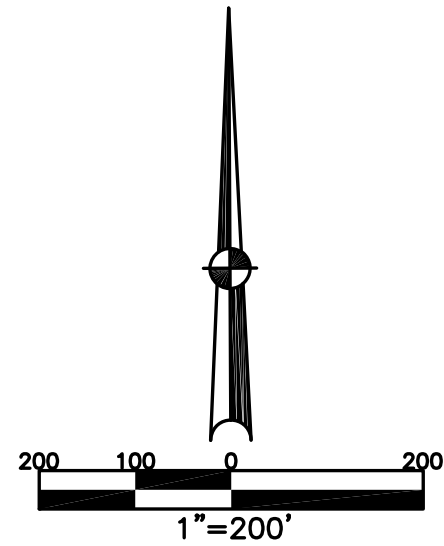


CONCORD TWP.  
MIAMI COUNTY, OHIO

SECTION 30 NW 1/4 TOWN 5 RANGE 6

PARCEL NUMBER  
C06-\_\_\_\_\_

PLAT 30-B



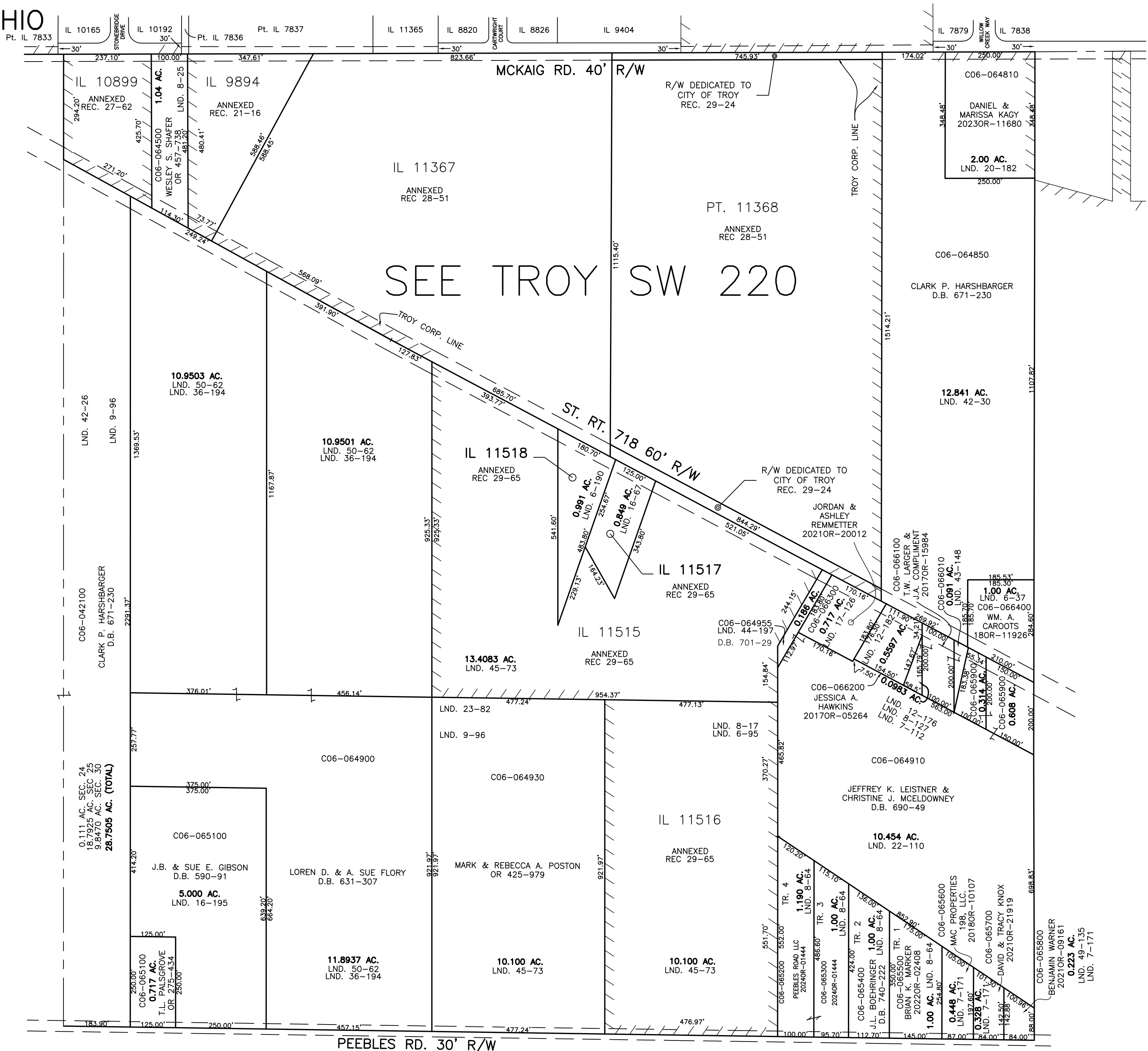
| ABBREVIATION LEGEND |   |                                  |
|---------------------|---|----------------------------------|
| 2014OR-07759        | = | RECORDER'S DOCUMENT NUMBER       |
| OR 257-619          | = | OFFICIAL RECORD 257 PAGE 619     |
| D.B. 613-172        | = | DEED BOOK 613, PAGE 172          |
| REC. 15-72          | = | RECORDER'S PLAT BOOK 15, PAGE 72 |
| LND. 33-15          | = | LAND SURVEY VOLUME 33, PAGE 15   |
| LOT 19-12           | = | LOT SURVEY VOLUME 19, PAGE 12    |
| R.R. 8-29           | = | ROAD RECORD VOLUME 8, PAGE 29    |
| R/W                 | = | RIGHT OF WAY                     |
| CL                  | = | CENTERLINE                       |
| AC.                 | = | ACRES                            |
| TWP.                | = | TOWNSHIP                         |
| TR.                 | = | TRACT                            |
| Ⓢ                   | = | LOT CREATED BY RECORDER'S PLAT   |

| LINE LEGEND |   |                   |
|-------------|---|-------------------|
|             | = | Blow-up Boundary  |
|             | = | Property Line     |
|             | = | Lot Split Line    |
|             | = | Section Line      |
|             | = | Centerline        |
|             | = | Right-of-Way Line |
|             | = | Corporation Line  |

| SURVEY INDEX |             |             |
|--------------|-------------|-------------|
| LND. 1-181   | LND. 12-176 | LND. 45-73  |
| LND. 5-95    | LND. 12-182 | LND. 49-135 |
| LND. 5-106   | LND. 15-181 | LND. 50-62  |
| LND. 6-116   | LND. 16-61  | REC. 59-127 |
| LND. 6-135   | LND. 16-195 | REC. 51-116 |
| LND. 6-190   | LND. 17-126 | REC. 28-51  |
| LND. 7-112   | LND. 20-182 | REC. 29-24  |
| LND. 7-112A  | LND. 22-110 | REC. 29-65  |
| LND. 8-17    | LND. 23-82  |             |
| LND. 8-20    | LND. 36-194 |             |
| LND. 8-64    | LND. 42-30  |             |
| LND. 8-127   | LND. 43-148 |             |
| LND. 9-96    | LND. 44-197 |             |



PREPARED BY: MIAMI COUNTY ENGINEER'S MAP DEPARTMENT  
PAUL P. HUELSKAMP, P.E., P.S., COUNTY ENGINEER  
DATE: AUGUST 25, 2014 MB

REVISED: February 14, 2024 DCASSEL

PEEBLES RD. 30' R/W