

SECTION 29  
TOWN 8  
RANGE 5

VILLAGE OF COVINGTON  
MIAMI COUNTY, OHIO

PARCEL ID NUMBER  
H19-\_\_\_\_\_

PLAT 72

HARRY SMITH SUBDIVISION 1  
LOTS 1038 THRU 1047  
REC. BK 5 PG. 66

HARRY SMITH SUBDIVISION 2  
LOTS 1086 THRU 1090  
REC. BK 6 PG. 58  
LOTS 1091 THRU 1095  
REC. BK 7 PG. 38

HARRY SMITH SUBDIVISION 3  
LOTS 1096 THRU 1100  
REC. BK 7 PG. 38  
LOTS 1101 THRU 1105  
REC. BK 7 PG. 9

EDWIN C. WRIGHT SUBDIVISION  
LOTS 725 THRU 765  
REC. BK 3 PG. 100

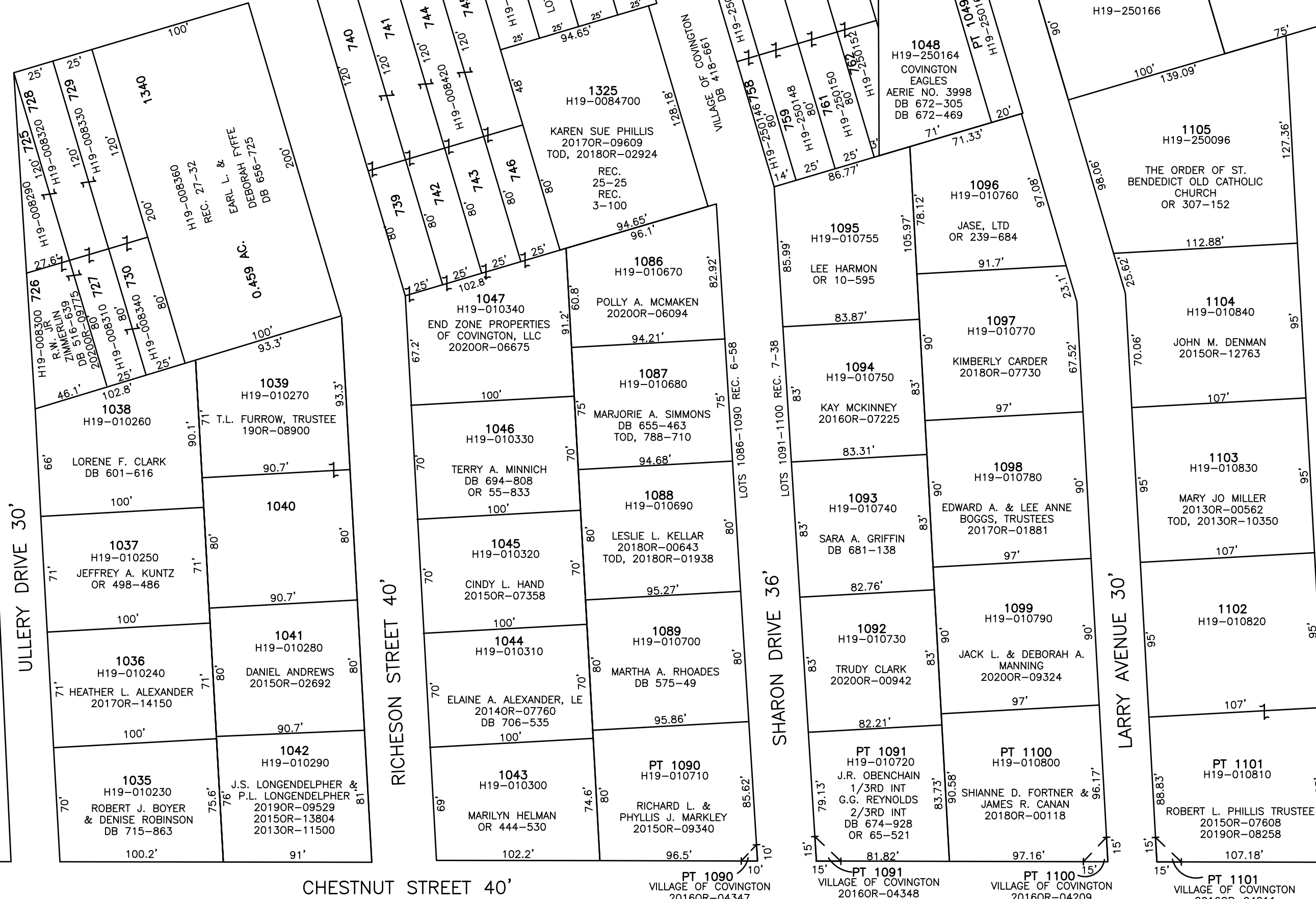
LOTS 747 THRU 754  
REPLATTED TO  
LOT 1325  
REC. 25-25

OUTLOT 46  
LOTS 1048 THRU 1081  
REC. BK 5 PG 81

SEE PLAT 74

SEE PLAT 79

EAST BROADWAY STREET (U.S. ROUTE 36) 60'



ABBREVIATION LEGEND	
2014OR-00759	= RECORDER'S DOCUMENT NUMBER
OR 406-509	= OFFICIAL RECORD 406 PAGE 509
D.B. 613-172	= DEED BOOK 613, PAGE 172
REC. 15-72	= RECORDER'S PLAT BOOK 15, PAGE 72
LND. 33-15	= LAND SURVEY VOLUME 33, PAGE 15
LOT 19-12	= LOT SURVEY VOLUME 19, PAGE 12
R.R. 8-29	= ROAD RECORD VOLUME 8, PAGE 29
R/W	= RIGHT OF WAY
C	= CENTERLINE
AC.	= ACRES
TWP.	= TOWNSHIP
TR.	= TRACT
IL	= INLOT

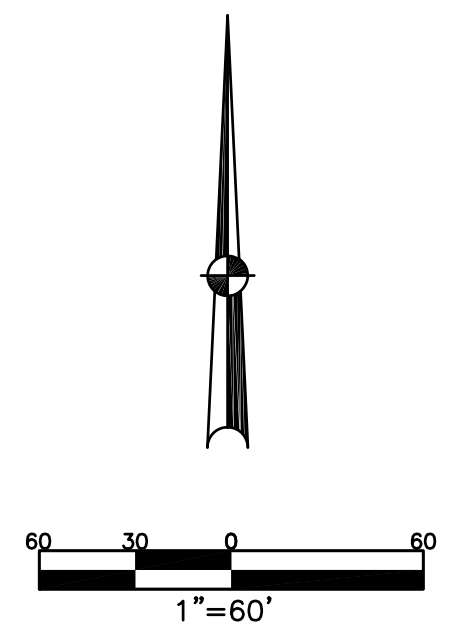
LINE LEGEND	
	Blow-up Boundary
	Property Line
	Lot Split Line
	Section Line
	Centerline
	Right-of-Way Line
	Corporation Line

SURVEY INDEX		
REC. 3-100	LOT 9-134	
REC. 5-66	LOT 7-109	
REC. 5-81	LOT 17-33	
REC. 6-58		
REC. 7-9		
REC. 7-38		
REC. 25-25		
REC. 25-37		
REC. 27-32		

SEE PLAT 71

SEE PLAT 80



CHESTNUT STREET 40'

SEE PLAT 77

PREPARED BY: MIAMI COUNTY ENGINEER'S MAP DEPARTMENT  
PAUL P. HUELSKAMP, P.E., P.S., COUNTY ENGINEER  
DATE: SEPTEMBER 27, 2018 IG  
REVISED: July 22, 2020 IGRIFIN