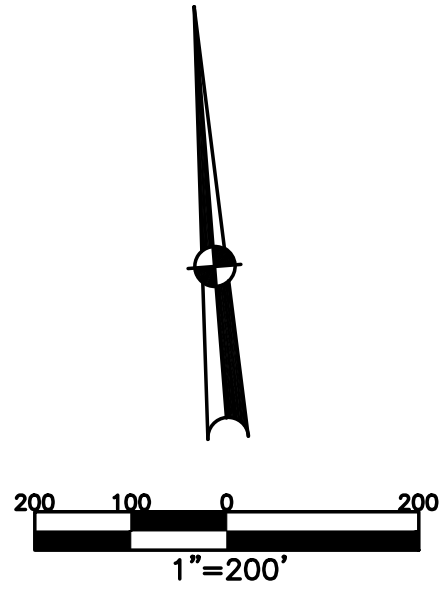


BETHEL TWP.
MIAMI COUNTY, OHIO

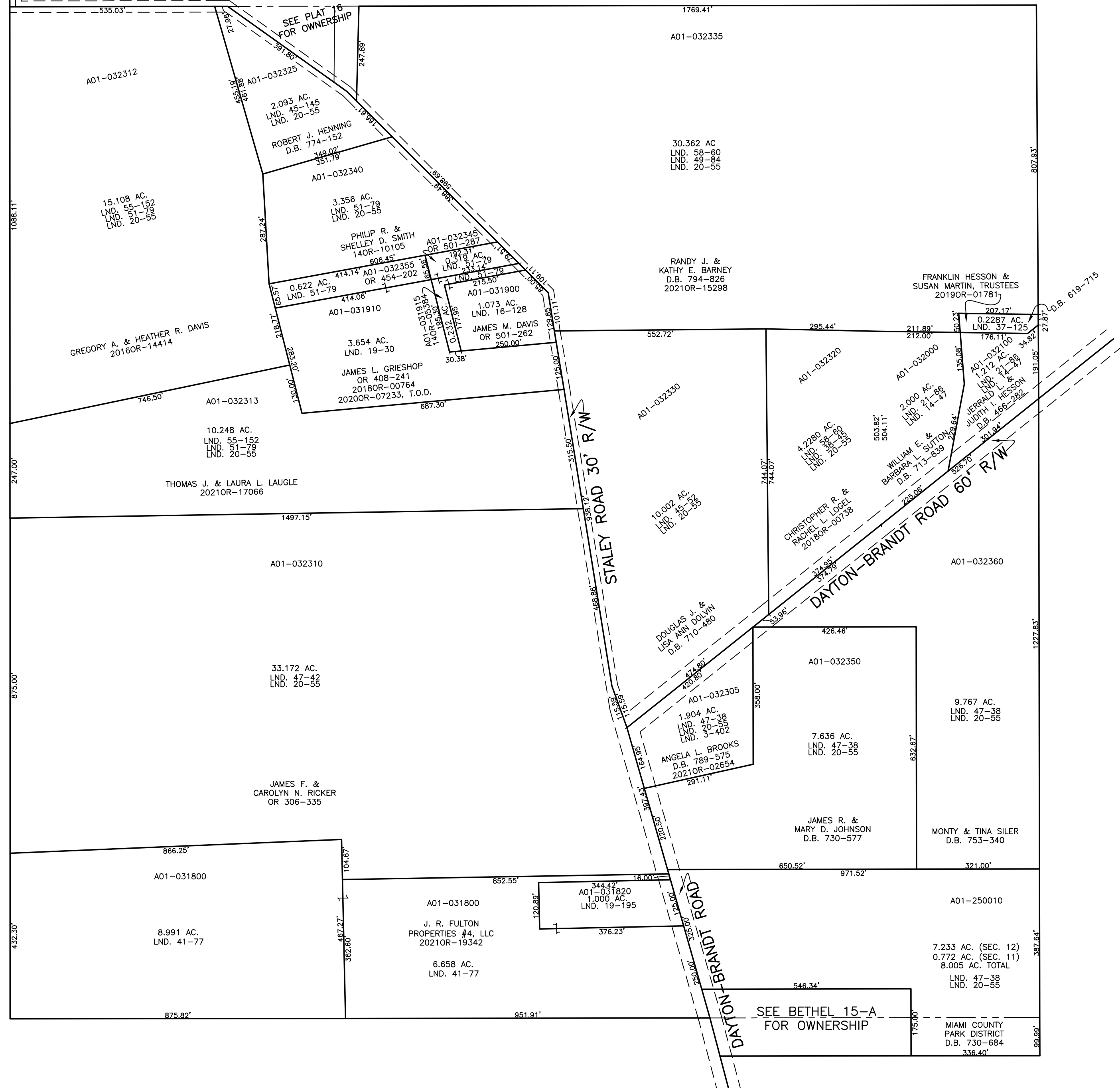
SECTION 12 TOWN 2 RANGE 9
SE 1/4

PARCEL NUMBER
A01-_____

PLAT 16-A



ABBREVIATION LEGEND	
2014OR-07759	= RECORDER'S DOCUMENT NUMBER
OR 257-619	= OFFICIAL RECORD 257 PAGE 619
D.B. 613-172	= DEED BOOK 613, PAGE 172
REC. 15-72	= RECORDER'S PLAT BOOK 15, PAGE 72
LND. 33-15	= LAND SURVEY VOLUME 33, PAGE 15
LOT 19-12	= LOT SURVEY VOLUME 19, PAGE 12
R.R. 8-29	= ROAD RECORD VOLUME 8, PAGE 29
R/W	= RIGHT OF WAY
C	= CENTERLINE
AC.	= ACRES
TWP.	= TOWNSHIP
TR.	= TRACT
Ⓢ	= LOT CREATED BY RECORDER'S PLAT
LINE LEGEND	
	Blow-up Boundary
	Property Line
	Lot Split Line
	Section Line
	Centerline
	Right-of-Way Line
	Corporation Line
SURVEY INDEX	
LND. 1-219	LND. 51-79
LND. 3-402	LND. 55-152
LND. 3-462	LND. 58-60
LND. 6-170	
LND. 14-47	
LND. 16-128	
LND. 19-30	
LND. 19-195	
LND. 20-55 (161+ AC.)	
LND. 21-86	
LND. 36-133	
LND. 37-125	
LND. 38-45	
LND. 41-77	
LND. 42-52	
LND. 45-145	
LND. 47-38	
LND. 47-42	
LND. 49-64	



PREPARED BY: MIAMI COUNTY ENGINEER'S MAP DEPARTMENT
PAUL P. HUELSKAMP, P.E., P.S., COUNTY ENGINEER
DATE: MARCH 11, 2016 MB

REVISED: November 8, 2021 APALMER

SEE BETHEL 15-A
FOR OWNERSHIP

MIAMI COUNTY
PARK DISTRICT
D.B. 730-684
336.40'